

Kobelco LNG BOG Compressors

TOUGH IN EXTREME COLD

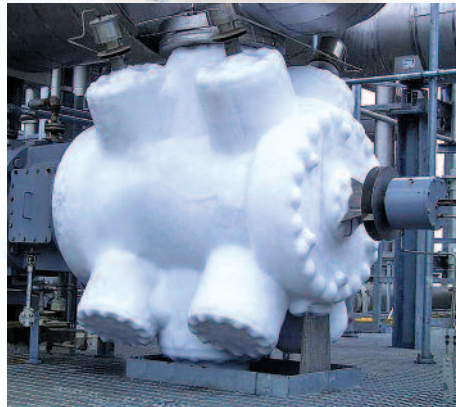
*Broadest
Capabilities
in the World*



Kobelco reciprocating compressors deliver robust performance in LNG boil-off gas and booster service. The API-618-compliant, horizontal design delivers the industry's broadest range of capabilities:

- inlet temperatures down to -162°C (-260°F)
- discharge pressures up to 220 bar (3,200 psi)
- power as high as 12,000 kW (16,000 hp).

Rugged design features – like die-forged steel connecting rods, steel-backed aluminum bearings and long-life valves – provide exceptionally high



reliability and dependable long-term value.

You'll enjoy low maintenance too, with extended continuous operating intervals and design features that make routine service simpler, faster and more economical to perform.

For LNG solutions, turn to Kobelco – a leader in gas compression technology since 1915.

***Kobelco LNG BOG Compressors –
high performance at low temperatures.***

KOBELCO
KOBELCO STEEL GROUP

Tokyo +81-3-5739-6771
Munich +49-89-242-18424



**Kobelco EDTI
Compressors, Inc.**

Houston, Texas
+1-713-655-0015
rotating@kobelcoedti.com

www.kobelcocompressors.com